

BRANDED MATERIAL EXPLANATION

We are almost obsessive in our desire to produce gear that is, as comfortable to wear as it is safe to ride in. It's why we spend so much time researching fabrics, developing new technologies and different construction methods. It's an ongoing pursuit. There's always a way to improve a garment and to improve biker's lives.

HiArt, for example, is a material that we developed as an abrasion-resistant backing material used in almost every product we produce. It can increase the strength of textile by up to 500% and leather by 200%. In addition to the in-house technologies, we use highly regarded materials and membranes like Dryway and Dryway+ to keep you dry and comfortable, Outlast linings to regulate temperature, Thinsulate to keep you warm and TFL to reflect heat when it's hot. Each of these technologies is rigorously tested and selected to suit our exact

needs for the product we design. Outer materials are chosen for their strength and durability. The thread used in stitching is chosen for strength while the size of the stitch is carefully calculated to offer maximum strength.

The very best materials form only part of the equation. Just as important as the technology, is the comfort and fit of the garment. Quite simply, a rider who is relaxed and comfortable on the bike is a rider who can focus all his attention and energy on staying alert and safe. This is why the materials we use are not just effective in keeping you safe, but also soft and supple, chosen for their lightness and ease of use. It doesn't stop there. All of our fitted protectors are adjustable for a perfect individual fit with adjustable hems, cuffs and waist areas to further emphasise this.

Put on one of our products, and you will see what we mean. All of which increases the chances of you arriving home safe and relaxed.

CARE INSTRUCTIONS

LEATHER GARMENTS

Leather garments must never dry out completely. Because dry leather fibres break easily under stress such as an accident, treat leather regularly with, e.g. Nikwax Waterproof Wax for Leather so that it retains its natural elasticity. Use a mild soap solution or leather soap such as Nikwax Leather Cleaner, two or three times a year to ensure garments last year in, year out. Always test it first somewhere that doesn't show, e.g. inside.

TEXTILE GARMENTS

To keep textile garments clean, wash them according to their washing instructions; we recommend the use of Nikwax Tech Wash. But don't forget to remove the armour. It would be best if you waterproofed outer garments often, preferably every three washes. Use Nikwax TX Direct for functional clothing.

COMING IN FROM THE RAIN

Let wet garments dry slowly at room temperature. Leather garments should not be dried at too high a temperature and never in a drying cabinet or on a radiator as this will make garments stiff and hard.

CLOTHES MADE FROM THE RIGHT STUFF

When we create new products, we set ourselves high standards. Our secret recipe for success is a century of craftsmanship blended with high technology. The result is motorcycle gear that's far ahead of the pack. Just ask any of the professional motorcyclists who wear our garments daily. For instance, we have a great response from some of the police forces around Europe. In this section, you can read all about the techniques and methods we use to keep you safe and comfortable on the road.

HI-ART **HI-ART** HI-ART is a proprietary material developed by us. We use the material in especially exposed areas to increase abrasion resistance. It makes leather 200 per cent stronger and textiles no less than 500 per cent stronger. We are extremely proud of our invention and of being alone in offering you this solution.

TRIPLE STITCH 3 **3STICH** A garment is never stronger than its seams. It makes no difference how good the material is if the seams break. Following a multitude of tests, we have found a technique that provides maximum durability. We use a well-balanced stitch density, a heavy-duty, hard-wearing thread in triple stitched seams in exposed areas.

OUTLAST **OUTLAST®** Outlast® is a high-tech material that regulated the temperature inside the garment. It was originally developed to protect astronauts against extreme temperature changes and has since then been further developed to work in motorcycle wear as well. The lining consists of millions of microscopic paraffin wax capsules that absorb, store and release excess heat to keep you feeling comfortable out on the road. Read more at outlast.com

mcFIT **mcFIT** Maximum Comfort FIT technology in gloves laminates the liner and membrane with the outer shell for a perfect fit and prevents the liner from following your hand when removed.

SKIN FIT **SKIN FIT** A technology used to secure glove linings. Where used the lining will remain firmly attached and not follow your hand when removed.

TEFLON **TEFLON®** A Teflon treatment on a garment will keep water and dirt away. It also allows the garment to dry quicker. Read more at teflon.com



Dryway+2.0, Dryway+ and Dryway Dryway+2.0, Dryway+ and Dryway are wind and waterproof membranes that keep you dry even in the wettest, windiest weather. The material allows moisture vapour to escape from the inside while keeping wind and rain out. Our latest functional membrane, Dryway+2.0, has a waterproofing value of 10,000mm and a 30,000g/m²/24h breathability value. Keep in mind that a membrane function relies upon the difference in humidity between the inside and outside. If an external heat source is applied such as heated grips or seats, the membrane will work in reverse.

DWR An extra water repellent treatment, on some of our textile and leather products, provides additional comfort to the user. Garments treated with a DWR will shed water more efficiently, retain their breathability properties and dry faster while also being easier to keep clean.

TFL COOL SYSTEM TFL Cool System®

Black leather can easily become hot in the sun. Therefore we use TFL Cool System – an innovation that ensures black leather to not absorb more heat, than lighter coloured materials. Once it has been treated, 80 per cent of the heat radiation is reflected away, and the garment can be up to 20 °C cooler.



An insulating material capable of retaining heat longer than even wool yet is lightweight, quick-drying and transports moisture efficiently away from the body. Consist of 100% Olefin / Polypropylene.



If a jacket bears this symbol, it has a pocket ready for our CE-approved HUNTLY back protector.



This product is pre-fitted with Velcro and can be complemented with a complete protection kit for pants. The CE-approved protectors come in two sizes.



This product has armour that achieves Level 2, the highest level, according to EN 1621-1:2012. Velcro attachments for a personal fit. Jackets have shoulder and elbow armour. Pants have hip and knee armour. Elbow and knee armour are designed to provide more protection on the outside of the knee/elbow.



THINSULATE®

Sometimes warm clothes can feel awkward and bulky, but thanks to Thinsulate, our garments are light and supple, while also keeping you warm. The secret behind the material is in the unique microfibrils that help trap body heat while allowing moisture to escape. Read more at thinsulate.com



NUDUD®

NUDUD is a new innovative high precision "touchscreen solution" that allows you to keep your gloves on in all situations, both on and off your motorcycle/snowmobile. The precision is second to none. Find more information at nudud.se



WINDWIRE®

WINDWIRE is a durable adjustment system that makes tightening and opening of garments and gloves very quick and easy. The dial system has been developed to give function and a perfect fit. Find more information at windwire.co.kr



The CE label shows that the product complies with an approved safety standard based on advanced testing and accident studies.

PREMIUM FEATURES



STATIONARY GLOVE LININGS

Maximum Comfort FIT and SKINFIT technology in gloves laminates the liner and membrane with the outer shell for a perfect fit and prevents the liner from following your hand when removed.



TOUCHSCREEN GLOVE

Innovative high precision "touchscreen solution" that allows you to keep your gloves on in all situations, both on and off your motorcycle/snowmobile. The precision is second to none.



ADJUSTMENT SYSTEM

WINDWIRE is a durable adjustment system that makes tightening and opening of garments and gloves very quick and easy. The dial system has been developed to give function and a perfect fit.



ARMOR READY

If a jacket bears this symbol it has a pocket in the lining, or an advance attaching system placed between the outer material and lining where you can adjust the position of your protector to your personal fitting.



AIR BAG READY

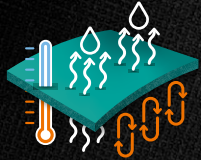
If a jacket bears this symbol it has been developed to be combined with any stand alone airbag system. The jacket expands with the airbag in the unlikely event of an accident. When choosing the jacket size always consider the airbag supplier's advice.



CHEST PROTECTOR READY

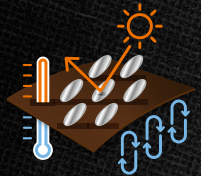
This jacket is equipped with a pocket for Halvarssons one-piece chest protector. Insert the protector into the protector pocket-sleeve. When closing the jacket, insert the sleeve-dressed protector into the protector garage, located on the other side of the front zipper. When choosing the jacket size always consider the airbag supplier's advice.

PREMIUM FEATURES



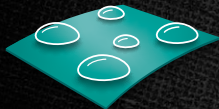
EFFECTIVE INSULATION

An insulating material capable of retaining heat longer than even wool yet is light weight, quick drying and transports moisture efficiently away from the body. Consist of 100% Olefin / Polypropylene.



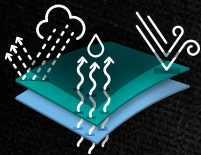
STAYS COOL

Black leather can easily become hot in the sun. Therefore we use TFL Cool System – an innovation that ensures black leather to not absorb more heat than lighter coloured materials. Once it has been treated, 80 per cent of the heat radiation is reflected away and the garment can be up to 20 °C cooler.



WATER REPELLENT

An extra water repellent treatment on some of our textile and leather products providing additional comfort to the user. Garments treated with a DWR will shed water more efficiently, retain their breathability properties and dry faster while also being easier to keep clean.



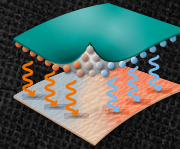
WIND, WATERPROOF & BREATHABLE

Dryway is wind and waterproof membranes that keeps you dry even in the wettest, windiest weather. The material allows moisture vapor to escape from the inside while keeping wind and rain out. Dryway has a waterproofing value of 7000 mm and a 7000 g/m²/24h breathability value. Keep in mind that a membrane's function relies upon the difference in humidity between the inside and outside. If an external heat source is applied such as heated grips or seats, the membrane will work in reverse.



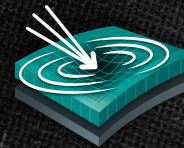
EFFECTIVE INSULATION

Sometimes warm clothes can feel awkward and bulky, but thanks to Thinsulate our garments are light and supple, while also keeping you warm. The secret behind the material is in the unique microfibrils that help trap body heat, while allowing moisture to escape.



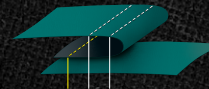
REGULATES TEMPERATURE

Outlast® is a high-tech material that regulates the temperature inside the garment. It was originally developed to protect astronauts against extreme temperature changes and has since then been further developed to work in motorcycle wear as well. The lining contains millions of microcapsules that absorb, store and release excess heat to keep you feeling comfortable out on the road.



SHOCK ABSORPTION

Our CE certified protectors are made of impact absorbing modified polyurethane. The combination of enhanced chemistry and product engineering provides high performance shock absorption and impact protection. Developed to fit our garments with Safety Attach System – S.A.S.



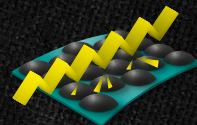
STRONGER SEAMS

A garment is never stronger than its seams. It makes no difference how good the material is if the seams break. Following a multitude of tests, we have found a technique that provides maximum durability. We use a well-balanced stitch density, a heavy-duty, hard-wearing thread in triple stitched seams in exposed areas.



HIGH ABRASION RESISTANCE

HI-ART is a proprietary material developed by us. We use the material in especially exposed areas to increase abrasion resistance. It makes leather 200 per cent stronger and textiles no less than 500 per cent stronger. We are extremely proud of our invention and of being alone in offering you this solution.

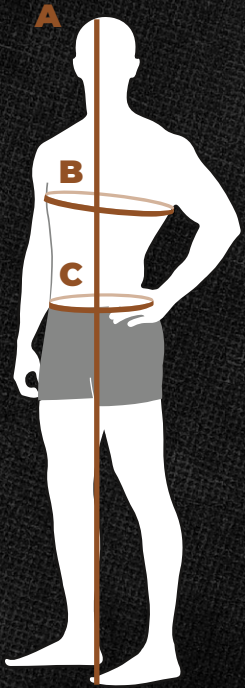


HIGH ABRASION RESISTANCE

SuperFabric® technology starts with a fabric and overlays it with tiny plates ("guard plates") in a specific arrangement. The gaps between guard plates allow complete flexibility. The geometry, thickness, and size of the guard plates, as well as the fabric, can be varied depending on the desired attributes. SuperFabric® materials are designed to deliver a range of performance features such as abrasion resistance, stain resistance, quick drying, weight reduction and more. The plates may cause scratches to the paint of your vehicle.

Looking good and feeling comfortable on the road demands the right size clothes. What many forget is that a good fit is also important for safety. Because it's essential for protectors to be positioned correctly, we make adjustments possible by attaching protection with Velcro. Also, remember to try on the garments together with the clothes you usually wear when riding your MC. And don't be afraid to ask our personnel for help. The best way to find the right size is to visit one of our dealers. They'll help you find the right fit when you need new equipment.

MEN

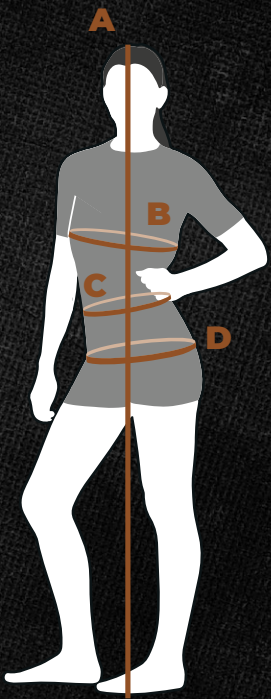


A	
Height (cm)	Size
172-178	= 46
174-180	= 48
176-182	= 50
178-184	= 52
180-186	= 54
182-188	= 56
184-190	= 58
186-192	= 60
188-194	= 62
190-196	= 64
192-198	= 66

B	
Chest (cm)	Size
90-94	= 46
94-98	= 48
98-102	= 50
102-106	= 52
106-110	= 54
110-114	= 56
114-118	= 58
118-122	= 60
122-126	= 62
126-130	= 64
130-134	= 66

C	
Waist (cm)	Size
78-82	= 46
82-86	= 48
86-90	= 50
90-94	= 52
94-98	= 54
98-102	= 56
102-106	= 58
106-110	= 60
110-114	= 62
114-118	= 64
118-122	= 66

WOMEN



A	
Height (cm)	Size
158-164	= 34
160-166	= 36
162-168	= 38
164-170	= 40
166-172	= 42
168-174	= 44
170-176	= 46
172-178	= 48
174-180	= 50

B	
Chest (cm)	Size
80-84	= 34
84-88	= 36
88-92	= 38
92-96	= 40
96-100	= 42
100-104	= 44
104-108	= 46
108-112	= 48
112-116	= 50

C	
Waist (cm)	Size
64-68	= 34
68-72	= 36
72-76	= 38
76-80	= 40
80-84	= 42
84-88	= 44
88-92	= 46
92-96	= 48
96-100	= 50

D	
Hip (cm)	Size
88-92	= 34
92-96	= 36
96-100	= 38
100-104	= 40
104-108	= 42
108-112	= 44
112-116	= 46
116-120	= 48
120-124	= 50

SIZE
AND
FIT

MEN

Normal Size	46	48	50	52	54	56	58	60	62	64	66
D-Size			100	104	108	112	116	120	124		
Long leg	L46	L48	L50	L52	L54	L56	L58	L60	L62	L64	L66
Short leg	S46	S48	S50	S52	S54	S56	S58	S60	S62	S64	S66
Inches	29-30	30-31	32-33	34-35	36-37	38-39	40-41	42-43			
Unisex Size	XS	S	M	L	XL	2XL	3XL	4XL			

D-Size: Leg length -5cm, waist +9 cm, seat +4 cm. Short leg: -8 cm. Long leg: +5 cm

WOMEN

Normal Size	34	36	38	40	42	44	46	48	50
D-Size				20	21	22	23	24	25
Short leg	S34	S36	S38	S40	S42	S44	S46	S48	S50
Long leg	L34	L36	L38	L40	L42	L44	L46	L48	L50
Unisex Women's	Lady XS	Lady S	Lady M	Lady L	Lady XL	Lady 2XL	Lady 3XL		
Inches	26-27	27-28	29-30	31-32	33-34	35-36	37-38		
Unisex Size	XS	S	M	L	XL	2XL			

D-Size: Leg length -5cm, waist +6 cm, seat +9 cm. Short leg: -8 cm. Long leg: +5 cm

GLOVES

Size	5	6	7	8	9	10	11	12	13	14
Unisex gloves	XS	S	M	L	XL	2XL				